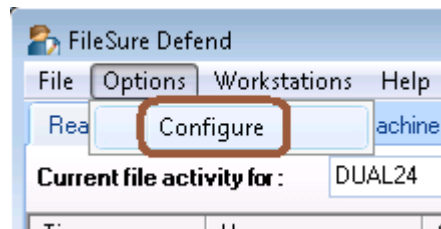


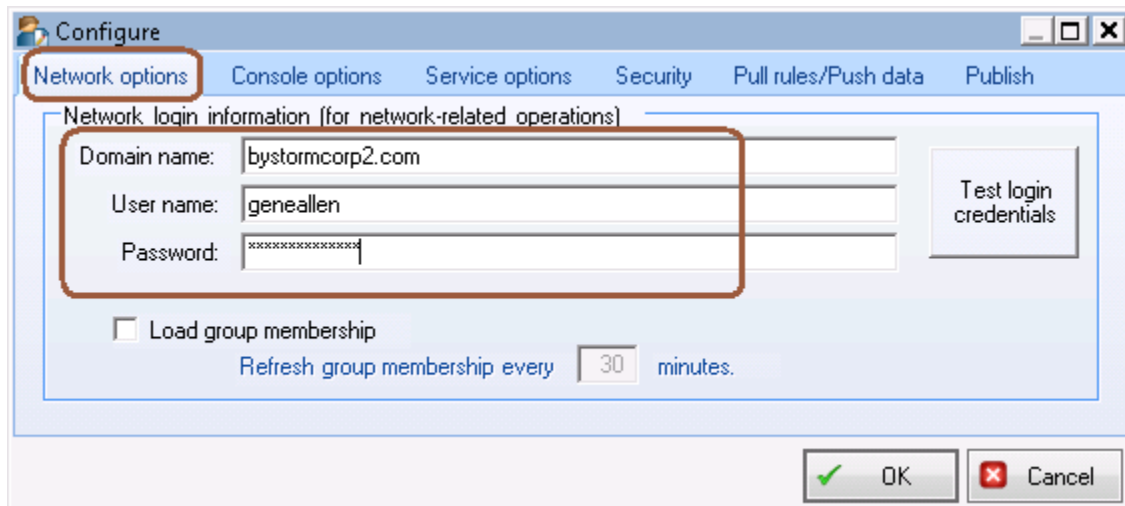
In a multiple server environment, sometimes it is convenient to configure FileSure rules on one server and have those rules applied to the other servers. For example, maybe you want a generic enterprise-wide auditing and security policy, but need specific rules for each department/server. This short 'How-to' document will show you how set that up.

1. Install FileSure on the 'Master' server and configure the rules that you want to apply to all the other 'slave' servers. [Note: local rules on the master server will be 'master' rules on slave servers. The slave server can augment but not override master rules.]
2. Install FileSure on a slave server and then start FileSure on it.
3. Since the slave server will need to access the master server, we need to define some credentials.

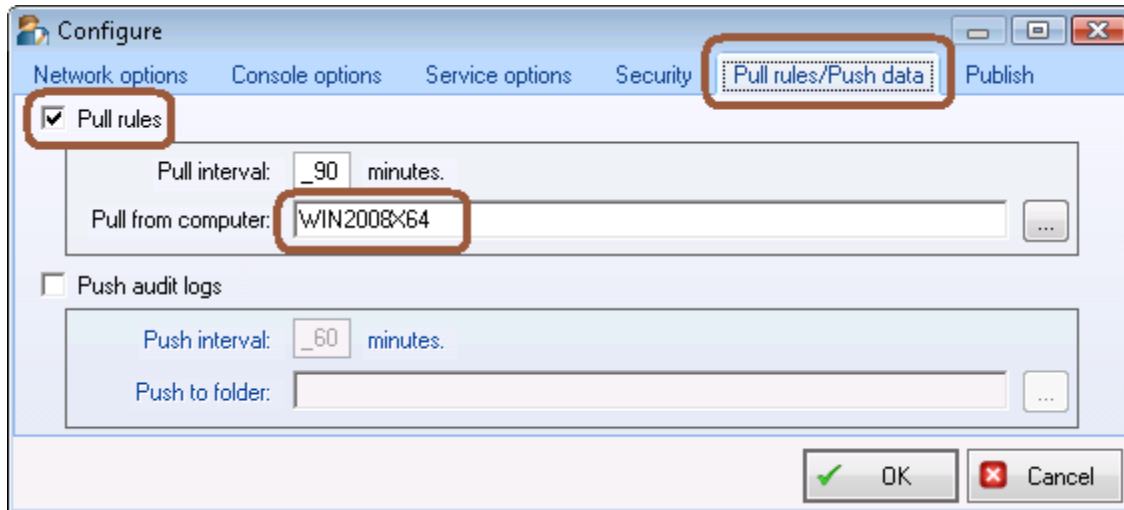


4. Use the menu to navigate to Options->Configure
5. Click on the Network Options Tab and enter the network credentials necessary to connect to the master computer and click 'Test login credentials' to make sure that work correctly.

[Note: these are the credentials that the FileSure service will use to connect to the ByStorm registry hive on the master computer, so the remote registry service will need to be running on the master server.]

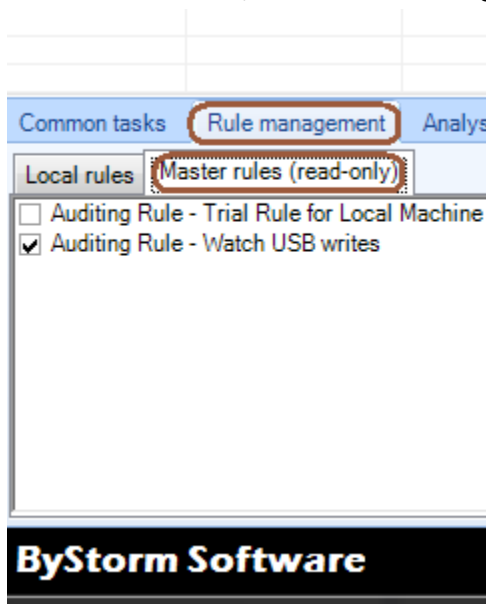


- Click the 'Pull rules/Push data' tab and check the 'Pull rules' checkbox; then either browse to the 'Master' server or type the machine name in. Click OK.



At this point, this 'Slave' server will pull the rules from your 'Master' server every 90 minutes. In addition to the master rules, any local rules that you create on this 'slave' server will only be enforced on this server and any workstations managed by this server.

- After a few minutes, on the Rules Management Tab, you'll see the Master's rules show up.



These rules are read-only to the slave server and can only be changed on the master server.

After the slave has successfully connected to the master at least one, it will continue to enforce the master's rules even if the connection the master is lost.